

Product
Catalog ▶
2020

Creating
space
within
space



LOGISTIC STORAGE SOLUTIONS
Since 1991

DRAWER UNIT

- Features** : Drawers have Full pull out (100% Open).
Finish : Powder Coating (RAL 9001).



Product code	Product Description	Drawer Capacity (kg)	Overall size (L x D x H) mm	Usable size (L x D x H) mm
MEPL M08 AC11 01	1 Drawer unit	20	385 x 510 x 185	315 x 460 x 85
MEPL M08 AC11 02	2 Drawer unit		385 x 510 x 308	315 x 460 x 85
MEPL M08 AC11 03	3 Drawer unit		385 x 510 x 431	315 x 460 x 85
MEPL M08 AC11 04	Drawer angle	2 nos. fixing angle provided with each drawer unit.		



MODEL MAT-12

- Features** : Working height is 850 mm (+50 mm Adjustable)
 Top MS sheet with 1.5 mm thick white carpet
 Load capacity of top surface is 250 kg UDL
 Standard single drawer with 25 kg. UDL load capacity on RH side
 Drawer usable space – 315 L x 460 D x 85 H (mm)
 Middle level MS decking panel
 Tilting shelf 325 mm depth for FPO Bin 35
 Soft Board with Blue cloth – 610 mm H x half length
 White Board with white laminate – 610 mm H x half length
 Electrical box with modular plate 08 on both sides
 Every modular plate with 3 nos switch and 2 nos socket
 2ft LED tube light for 1200 length
 4ft LED tube light for 1400 and 1800 length
 Instruction display with A3 and A4 folder
 A4 document holder with 10 nos. pages
 LR channel with trolley 5 kg capacity
 Height adjustment leveller

Finish : Powder Coating (Structure - RAL 5015, Accessories - RAL - 9001).

Product code	Dimensions (L x W x H)mm
MEPL M08 MM13 01	1000 x 700 x 2150
MEPL M08 MM13 02	1200 x 700 x 2150
MEPL M08 MM13 03	1400 x 700 x 2150
MEPL M08 MM13 04	1800 x 700 x 2150



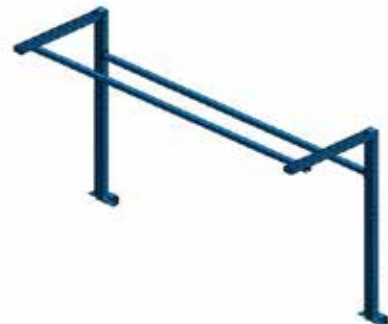
BASIC



- Features** : Working height is 850 mm.
Table top is 48 mm thick beach wood..
- Finish** : Powder Coating (RAL 5015).

Product code	Dimensions (L x D) mm	Load Capacity (kg)
MEPL M11 BW01 01	1500 x 700	1000
MEPL M11 BW01 02	1800 x 700	
MEPL M11 BW01 03	2000 x 700	

UPPER FRAME (L -TYPE)



- Features** : Upper frame assembly has attached to the basic work bench
This is used for top accessories attachment
Frame (L – type) height is 1300 mm from top surface
- Finish** : Powder Coating (RAL 5015).

Product code	Lenght (mm)
MEPL M11 AC01 01	1500
MEPL M11 AC01 02	1800
MEPL M11 AC01 03	2000

UPPER FRAME (STRAIGHT -TYPE)



- Features** : Upper frame assembly has attached to the basic work bench.
This is used for top accessories attachment
Frame (Straight type) height is 600 mm from top surface
- Finish** : Powder Coating (RAL 5015).

Product code	Lenght (mm)
MEPL M11 AC02 01	1500
MEPL M11 AC02 02	1800
MEPL M11 AC02 03	2000

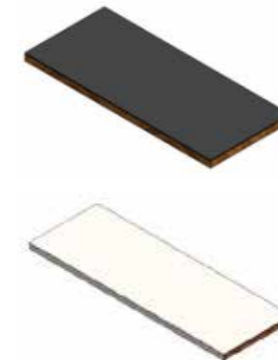
FOOTREST



- Features** : Foot rest 300 mm width is fixed to bottom side of work bench.

Product code	Lenght (mm)
MEPL M11 AC21 xx	1500
MEPL M11 AC21 xx	1800
MEPL M11 AC21 xx	2000

TABLE TOP SURFACE



- Features** : Loose rubber sheet put on top of the table top.
Finish : MS powder coated sheet with front side fold .

Product code	Length (mm)	Type of Surface
MEPL M11 AC04 01	1500	Rubber sheet 6mm thick (Black Colour)
MEPL M11 AC04 02	1800	
MEPL M11 AC04 03	2000	
MEPL M11 AC08 01	1500	MS sheet 2mm thick (Powder Coated)
MEPL M11 AC08 02	1800	
MEPL M11 AC08 03	2000	

LR CHANNEL



- Features** : For hang air gun, soldering m/c with max. capacity 5 kg.
Finish : Powder Coating (RAL 5015).

Product code	Lenght (mm)
MEPL M08 AC17 05	1500
MEPL M08 AC17 06	1800
MEPL M08 AC17 07	2000

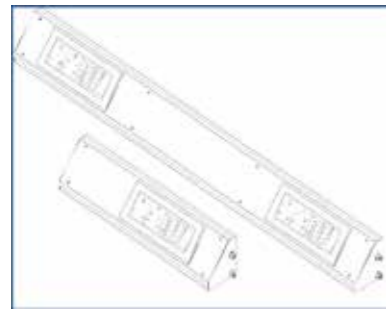
SPRING BALANCER



Features : Used for hanging tools

Product code	Load Capacity (kg)
MEPL M08 AC20 07	3
MEPL M08 AC20 08	5

ELECTRICAL BOX UNIT



Features : In one standard switch box plate consists of
 For Switch and Socket - 5A, 15A (01 no each)
 For tube light - 5A switch (01 no)
 For dummy location - End cap (01 no)

Finish : Powder Coating (RAL 9001).

Product code	Lenght (mm)	Switch Box
MEPL M08 AC03 10	1500	Both side
MEPL M08 AC03 08	1800	Both side
MEPL M08 AC03 13	2000	Both side

SURFACE BOX UNIT



Features : In one standard surface box plate consists of
 For Switch and Socket - 5A, 15A (01 no each)
 For tube light - 5A switch (01 no)
 For dummy location - End cap (01 no)

Product code	Part Description
MEPL M11 AC15 01	Surface Box with modular plate 8

TUBE LIGHT



Features : Tube light frame with half reflector.

Product code	Part Description
MEPL M08 AC25 15	LED Dual tube light 4'

TOOL CABINET LIGHT DUTY

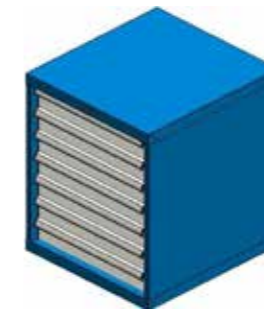


Features : Drawer usable space (MEPL - II): 460 L x 490 D (mm)
 All drawers have Full Pull-out (100% open)
 Load capacity of every drawer - 40 kg UDL
 Having central locking system with lock and keys.

Finish : Powder coating (Cabinet – RAL 5015, Drawer – RAL 9001).

Product code	Model No / Size (L x W)	Height (mm)	Drawer Height / Qty.		
			100	125	150
MEPL M09 TL08 01	MEPL – II (560 x 600)	425	2	1	-
2 quantity fixing angle is supplied in each drawer unit.					

TOOL CABINET MEDIUM DUTY

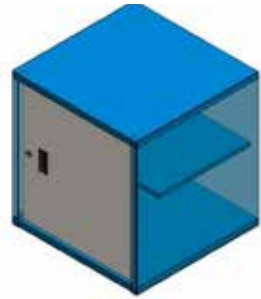


Features : Drawer usable space (MEPL - II): 460 L x 490 D (mm)
 All drawers have Full Pull-out (100% open)
 Load capacity of every drawer - 100 kg UDL
 Having central locking system with lock and keys

Features : Powder coating (Cabinet – RAL 5015, Drawer – RAL 9001).

Product code	Model No / Size (L x W)	Height (mm)	Drawer Height / Qty.	
			100	125
MEPL M09 TM03 01	MEPL – II (560 x 600)	800	7	-
2 nos. fixing angle is required on each drawer unit				

CABINET WITH DOOR



- Dimension** : L x 610 D x 600 H (mm).
- Features** : Having 01 middle shelf of 50kg UDL and Door with lock and key.
- Finish** : Powder coating (Cabinet – RAL 5015, Door – RAL 9001).

Product code	Part Description
MEPL M11 CA12 02	Cabinet 800H with Door (RH side open)

TILTING SHELF



- Features** : To keep the FPO Bin, boxes and depth is 325 mm.
- Load Capacity** : Max. 100 kg. UDL.
- Finish** : Powder Coating (RAL 9001).

Product code	Lenght (mm)
MEPL M08 AC12 06	1500
MEPL M08 AC12 05	1800
MEPL M08 AC12 07	2000

PERFO PANEL (FULL LENGHT)



- Features** : To keep tools and height is 610 mm.
- Finish** : Powder Coating (RAL 9001).

Product code	Lenght (mm)
MEPL M08 AC05 09	1500
MEPL M08 AC05 10	1800
MEPL M08 AC05 11	2000

SOFT BOARD (FULL LENGHT)



- Features** : To stick instructions, reports and height is 610 mm.
- Finish** : Powder Coating (RAL 9001).

Product code	Lenght (mm)
MEPL M08 AC07 09	1500
MEPL M08 AC07 10	1800
MEPL M08 AC07 11	2000

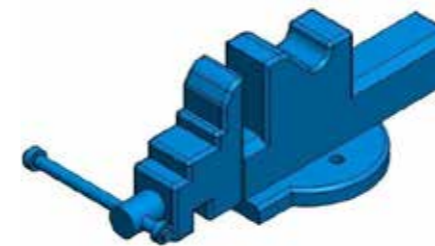
WHITE BOARD (FULL LENGHT)



- Features** : To write the instructions and height is 610 mm.
Board is Non-magnetic.
- Finish** : Powder Coating (RAL 9001).

Product code	Lenght (mm)
MEPL M08 AC09 09	1500
MEPL M08 AC09 10	1800
MEPL M08 AC09 11	2000

BENCH VICE



Product code	Part Description
MEPL M11 AC18 02	Bench Vice - 4'
MEPL M11 AC18 01	Bench Vice - 6'

DOCUMENT FOLDER



Features : To display the drawings and assembly instruction.

Product code	Set of Pages	Folder Type
MEPL M08 AC20 01	5	A4
MEPL M08 AC20 02	10	
MEPL M08 AC20 03	5	A3
MEPL M08 AC20 04	10	

WORK BENCH - WBM 08



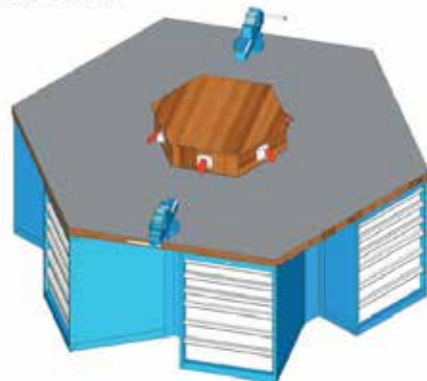
Features : Working height is 848 mm
 Table top is 48 mm thick beach wood
 Load capacity of top surface is 1000 kg UDL
 Tool cabinet Light duty (MEPL – II) – 560 L x 600 D x 650 H(mm)
 Drawer height combinations are F100 – 1, F150 – 3 on LH side
 Drawer height combinations are F100 – 3, F125 – 2 on Middle
 Drawer usable space - 460 L x 490 D (mm)
 All drawers have Full Pull-out (100% open)
 Load capacity of every drawer - 40 kg UDL
 Cabinet with door - 610 L x 600 D x 650 H (mm) on RH side
 Cabinet having 01 middle shelf and Door with lock and key

Finish : Powder coating (Cabinet – RAL 5015, Drawer, Door – RAL

Product code	Dimensions (L x W x H) mm
MEPL M11 WM08 01	2000 x 700 x 848

WORK BENCH HEXAGONAL - WBM 09

thick) - Optional.



Features : Working height is 848 mm
 Table top is 48 mm thick beach wood
 Load capacity of top surface is 1000 kg UDL
 Tool cabinet Light duty (MEPL – II) – 560 L x 600 D x 800 H (mm) – 6 nos.
 Drawer height combinations are F100 – 3, F125 – 2, F150 - 1
 Drawer usable space - 460 L x 490 D (mm)
 All drawers have Full Pull-out (100% open)
 Load capacity of every drawer - 40 kg UDL
 Industrial socket 6 nos. all sides
 Bench vice 6" – 02 nos.

Finish : Powder coating (Cabinet – RAL 5015, Drawer, Door – RAL

Model Type	Product code	Dimensions (L x W x H) mm
Workbench + Plain Top	MEPL M11 WM09 01	2400 x 2100 x 848
Workbench + Top Electric socket	MEPL M11 WM09 01	2400 x 2100 x 848

WORK BENCH TROLLEY - WBM 03



Features : Working height is 900 mm
 Table top is 48 mm thick beach wood
 Load capacity of trolley is 400 kg UDL
 Tool cabinet Light duty (MEPL – II) – 560 L x 600 D x 425 H (mm)
 Drawer height combinations are F100 – 2, F125 – 1 on RH side
 Drawer usable space - 460 L x 490 D (mm)
 All drawers have Full Pull-out (100% open)
 Load capacity of every drawer - 40 kg UDL

Wheel : Dia 125, 2 Fix + 1 Swivel + 1 Swivel with Brk

Finish : Powder coating (Cabinet – RAL 5015, Drawer – RAL (9001).

Product code	Dimensions (L x W x H) mm
MEPL M11 WT01 01	1500 x 700 x 900
MEPL M11 WT01 02	1800 x 700 x 900
MEPL M11 WT01 03	2000 x 700 x 900

Creating
space
within
space

METAFOLD ENGINEERING PVT LTD.

Sr. No. 27/5/2, Kondhwa (BK), Punyadham Ashram Road,
Pune - 411048 (Maharashtra_India).

Email - sales1@metafold.com | sales2@metafold.com

Tel - 02026933664 | Fax - 02026933684

www.metafold.com



LOGISTIC STORAGE SOLUTIONS

Since 1991